

# AUTO LIFT **3000**

## Portable Vehicle Lift



| **User manual**



Read these safety instructions carefully and keep this manual in a convenient location for future use. Non-compliance with these instructions may result in injury or damage to the lift or vehicle.

I have read and understand this manual and I understand this product with full knowledge of its effect.

## | Contents

<b>Safety information</b>	<b>3-4</b>
<b>Package contents</b>	<b>5</b>
<b>Use</b>	<b>5-6</b>
<b>Manual montage</b>	<b>7-8</b>
<b>How to install rails for uneven surface</b>	<b>9</b>
<b>How to use jack stand</b>	<b>10</b>
<b>Warranty</b>	<b>11</b>
<b>Pictures</b>	<b>12</b>
<b>Declaration of conformity</b>	<b>13</b>
<b>AUTOLift3000 characteristics</b>	<b>14</b>

## | Safety information

Before assembly and use of product, carefully read the instructions provided. The manufacturer and retailer are not responsible for any injuries or damages that result from incorrect assembly or usage. Non-compliance with these instructions may result injury or damage to the property. Always keep the instructions in a safe and accessible location for future reference.

### **SAFETY INFORMATION FOR CHILDREN AND SUSCEPTIBLE INDIVIDUALS**

This product is meant to be used by persons aged 19 years and above. It should not be used by anyone with reduced physical, sensory or mental capabilities or lack of experience and knowledge of similar types of devices. Do not let children use or play with this product. Keep all packaging and accessories away from children.

### **GENERAL SAFETY**

This product is intended to be used in body shops, automotive repair shops and similar locations such as assembly centers for towing equipment and exhausts, car showrooms, pre-owned car dealers, hand car washes, garages, advertising agencies and auto enthusiasts. This product is intended to be used as a vehicle lift with a maximum load capacity of 6614 lbs.

**WARNING!** Only a qualified person may use and assemble this product. Do not assemble or use the product if damaged. Always take care when moving the product as it is heavy. Always use safety gloves and steel toe safety work boots. Do not change the specifications or parts of this product. AUTOLift3000 is intended to be used to lift vehicles with unibody construction only. Do not use this product to lift or tilt vehicle with body-on-frame construction! The manufacturer and seller are not responsible for any injuries or damages that are the result of usage while lifting and/or tilting vehicles with body-on-frame construction. When you move the product to the vertical position, lift it and do not touch the ground with the lift to avoid scratching the floor.

### **PRECAUTIONS**

1. It is strictly forbidden to use a compressed air impact valve (pic 1, page 12) or hammer drilling tools.
2. Use a drill with a minimum 10 Amp motor (120V). When using the drill, follow the safety instructions and precautions of the drill. A lesser powered drill may strain or burnout while trying to work the gears of the lift.
3. Before raising or lowering the load, check systematically to make sure the safety pin has been removed.
4. Do not exceed the maximum lifting height indicated by the red signal (pic 6, page 12).
5. Do not force the drill when the lift is flat, as it can cause significant damage and bending the bars.
6. Normal operating sound is around 72dB while drilling up.

### **SAFETY INSTRUCTIONS**

Do not exceed the stated capacity. Use on a hard, flat and non-slip non-skid surface that is suitable for supporting the load. Once raised, it is essential to lock the lift with the safety pin on the side (pic 2, page 12). It is prohibited to work under the vehicle

unless the jack stand has been installed. Check that the load is stable on the lift. Ensure that the load cannot tilt or slide off. Do not try to move the load when it is on the lift. Do not drive a vehicle over the lift. Never use the lift if it is damaged or broken. Do not modify any of the equipment or components on the lift. The lift is designed to raise cars and vehicles only. It must not be used for any other purpose. Do not approach the vehicle when it is being raised or lowered on the lift. Consider that if you remove a significantly heavier part of the vehicle, for example the engine, a heavy load in the trunk etc, the center of gravity of the vehicle may change and the vehicle may tilt by itself. Always use the jack stand. The lifting device can be used on all reinforced surfaces commonly used in service centers and garages (concrete floors, heavy-duty pavements etc.). Use of rails for any uneven surface is always recommended. To avoid damage or scratching of any surface, for example if the lift is used in showrooms or spaces with polished pavement (or any other interior non-heavy-duty pavement), we recommend to use the rails for uneven surfaces or to place a sheet metal plate under the metal travelling wheels. The travelling wheels bear the entire weight of the lifted vehicle and they can thus leave markings or scratches in polished pavements. Never use AUTOLift3000 on very muddy (melted) asphalt, muddy ground, non-horizontal surfaces (no uphill or downhill), very uneven surface like stones or rocks, surface with big holes or surfaces with a tendency to collapse. Failure to follow these instructions may result in injury or damage to the lift or vehicle. The manufacturer and seller are not responsible for any injuries or damages that are the result of incorrect assembly or usage of rails for uneven surface, incorrect usage of the product on an unrecommended surface.

## **MAINTANANCE**

Product does not require any maintenance. Do not use any detergents, abrasive products, abrasive cleaning pads or any other aggressive cleaners when cleaning the product. For cleaning use soft wet or dry cloth only.

## **STORAGE**

The AUTOLift3000 can be kept leaning against the wall on the gear box housings (pic 3, page 12) or hanging on the wall with special a holder. The holder can be purchased as an accessory. Temperature of the room in which the AUTOLift3000 is stored should be between 0 °C (35 °F) and +40 °C (104 °F).

**WARNING!** The product should be assembled, used and stored well away from sources of heat such as radiators, boilers, direct sunlight etc. Sources of heat can damage the rubber on the beam pads. Metal parts of the product could get very hot due to a source of heat and contact with skin or other part of body could cause injury. The manufacturer and seller are not responsible for any injuries or damages that are result of incorrect storage of the product.

## Package contents



### Lift

requires assembly, see Manual montage on page 7



### Jack stand

see page 10 for How to use jack stand



### Beam pads

see USE on page 6



### Rails for uneven surface

requires assembly, see page 9



### Caster wheels washers - 4pcs

in case of using the rails for uneven surface



### Drill adapter - 4 pcs



### Safety pin

uses in the security tubes



### Wall holders

## FIRST USE

Grease streaks can show on the tubes when using product for first few instances. Use soft cloth to clean grease from the tube. The grease occurring on the tubes does not damage the product. Grease can be difficult to remove from clothes or skin etc.





## **USE**

Secure vehicle before using lift. Use the lift with the vehicle only on horizontal surfaces (no uphill or downhill). Place the assembled lift to the side of the vehicle. The gear box housings must be placed in the position based on the location of the motor of the vehicle. Place toward the front of the vehicle if the engine is located in the front of the vehicle and toward the back if the engine is located in the back of the vehicle. Place the lift under the vehicle and centre it on the axis of the vehicle that runs lengthwise. The two platforms with rubber supports must be placed symmetrically under the vehicle (pic 4, page 12). Check that the two platforms are not touching a fragile part of the vehicle. Make sure the lift rests on a solid part of a vehicle to prevent any damage to plastic or fragile parts. If necessary, use the extra beam pads that are included with the lift. It is recommended to use the beam pads when lifting vehicles with extended plastic side skirts, etc. To raise the front part of the vehicle, place the gear box housings in close contact with the front wheels of the vehicle (for vehicles with a front engine layout). To raise the rear part of the vehicle, place the lift back a few centimetres so that the load is placed further forward.

## **RAISING THE LIFT**

Before you raise the vehicle, check your entire surroundings to make sure there is plenty of working space so as not to hit any parts of the vehicle or ceiling, etc. Insert the four square drill adapter (pic 5, page 12) onto the drill bit and place it in the shaft of the gearbox housing. Start the drill in the clockwise direction and hold it steadily. Do not exceed the maximum height indicated by the red label on the adjustable arm (pic 6, page 12) on the side of the lift. Once the required height has been reached, it is necessary to secure the position of the lift by inserting the safety pin into the respective slot on the adjustable arm. Check that the vehicle is stable before starting any kind of work. It must not be able to slide or tilt even when the operator uses force during work. If the vehicle is at risk of tilting, lower the lift and move it until there is greater weight on the wheels that are in contact with the floor. Place the jack stand under the vehicle before starting to work. See page 10 for how to use the jack stand.

## **LOWERING THE LIFT**

Remove the safety pin. If the safety pin is not removed and there is an attempt to lower the lift, it may damage the lift. Place the drill bit in the lift to lower the vehicle. Start the drill slowly in the counterclockwise direction and hold it steadily. Lower the lift until the vehicle load is resting on the wheels and the lift can be removed easily from the side of the vehicle.

**CAUTION!** Raise and lower the lift slowly. Do not force the drill when the lift is flat, as it may cause serious damage and bend the bars.

## **TILTING**

In normal cars, the gearbox housings should be in close contact to the front wheels. For family minivans, leave between 2-4 inch. For rear engine cars, leave 10-12 inch between gearbox housings and wheels. It is possible to tilt the front or rear part of the vehicle manually from both ends. It is recommended to grab the vehicle by the part touching the floor. Always grab the vehicle by a solid part (f.e. fender, bumper etc). Hold on to the vehicle while tilting to prevent sudden movements which could damage it. After tilting, reposition the jack stand correctly. The manufacturer and seller are not responsible for any injuries or damages that are result of incorrect grabbing a tilting.

**WARNING!** Never tilt the vehicle if there is someone or something under the vehicle.

# First time set up

## Kit content

- Tilting form
- Platforms 2 pcs
- Fixing shank complete platform
- (2 axis rods / 2 nuts / 4 washers / 4 caps)
- Set of 3 caster wheels
- + mounting screws
- Drill adapter (4 pcs)
- Safety pin
- User Manual



## Assembly tools:

- 2x socket wrench - 30 mm
- wrench - 8mm
- phillips head screwdriver

**1.** Open the box with AUTOLift3000.



**2.** Remove platforms from the package.



**3.** Lift two articulated arms until both are the same height.



**4.** Insert the axis rod through both holes of the frame.



**5.** Place the washers A21 on both sides.



**6.** Place the platform on the axis rod. Fix first from outside and then from inside.





**7.** Insert the cover on both sides of the axis.



**8.** Fasten the nuts on both ends of the axis and tighten with the 30mm wrench.



**9.** Install the platform on the other side as well.



**10.** Fix the wheels to the frame.




**11.** Place the drill adapter on the drill.

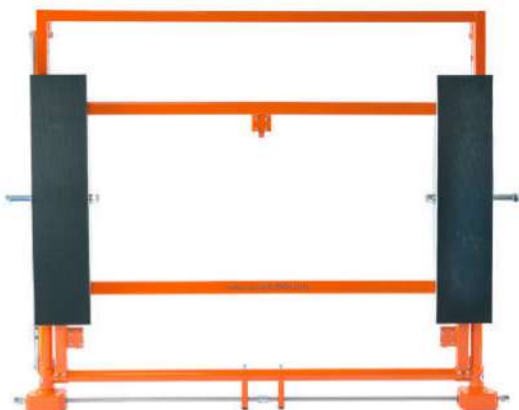


**12.** Lower the lift, follow the drill rotation direction, marked by arrows on the gear boxes.



 **WARNING!** Do not force the drill when the lift is in its lowest position.  
Do not use the drill at high speed.

**13.** Your Autolif3000 is complete.



## How to install the rails for uneven surface

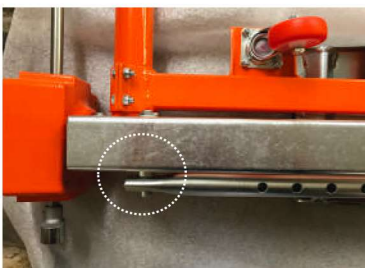
1. Take the caster wheels off and place caster wheels washers between the frame and caster wheels. Tighten with longer screws included in the package.



3. Once the dowel pin is removed, make sure there is nothing else to remove from the security tube.



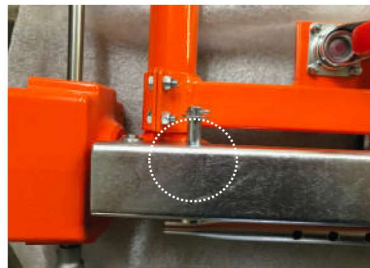
5. Reassemble the security tube with the lift. Do not forget to add one of the washers before inserting the security tube. Afterwards, insert the 2nd washer and the other split cotter pin.



2. Use pliers to remove the split cotter pin. Before removing the security tube from the lift, remove the washers and dowel pin.



4. Place the rail on the frame so that the holes for replacing the dowel pin are aligned. Insert the dowel pin with washers and split cotter.



4. Place the rail on the frame so that the holes for replacing the dowel pin are aligned. Insert the dowel pin with washers and split cotter.



**WARNING!** The travelling wheels bear the entire weight of the lifted vehicle and they can thus leave markings or scratches in polished pavements.

## How to use jack stand

1. Prepare the jack stand vertically.



2. Unfold the jack stand to make it stable.



3. Pull up the adjustable rotary adapter and secure with the pin.



4. The jack stand can be attached to any stable and solid point on the chassis.



**WARNING!** While working on a lifted vehicle, always secure the vehicle with a jack stand.

## Warranty

The manufacturer and seller are not responsible for any injuries or damages that result from incorrect assembly or usage. This warranty guarantees the Autolift3000 to be free of all defects in material and workmanship for 3 years from the date of purchase (or delivery, whichever comes first) by the original purchaser. Accessories are covered by a warranty for a period of 12 months. The warranty will not apply unless all the instructions in user manual have been adhered to. To obtain warranty service, you must first contact us to determine the problem and the most appropriate solution for you. You can contact us by email at: support@autoliftproduction.com

All warranty repairs and services must be performed by an AUTOLIFT PRODUCTION USA Inc. All expenses related to replacing or repairing a defective part under this warranty shall be assumed by the AUTOLIFT PRODUCTION USA Inc., except for the shipping expenses to/from AUTOLIFT PRODUCTION USA Inc. which shall be assumed by the buyer, unless otherwise agreed by AUTOLIFT PRODUCTION USA Inc. and customer.

This Warranty does not cover any issue that is caused by the following: conditions, malfunctions or damage not resulting from defects in material or workmanship, any damage resulting from improper maintenance, any damage of a product resulting from unauthorized modification of the product, any damage caused by using equipment beyond recommended capacity, any damage caused by natural disaster, any damage resulting from fluid infiltration or dump. This list is not restrictive.

Recognition of a warranty claim can never lead to an extension of the warranty period or to the beginning of a new warranty period if the equipment has been replaced.

Equipment or spare parts exchanged under the warranty are therefore owned by AUTOLIFT PRODUCTION USA Inc.

AUTOLIFT PRODUCTION USA Inc. reserves the rights to reject any claim in cases where purchases can not be verified or when it is clear that the product has not been properly maintained. Keep the proof of purchase as proof of the date of purchase. Devices must be returned to AUTOLIFT PRODUCTION USA Inc. in a non-disassembled condition, together with the proof of purchase.

### **DAMAGES NOT COVERED UNDER WARRANTY**

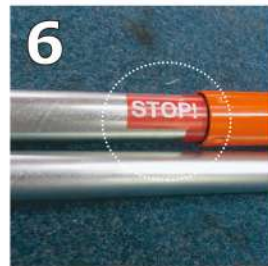
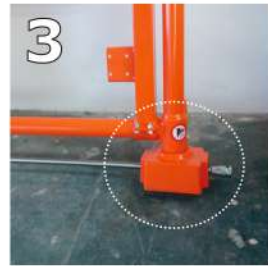
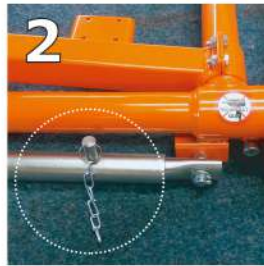
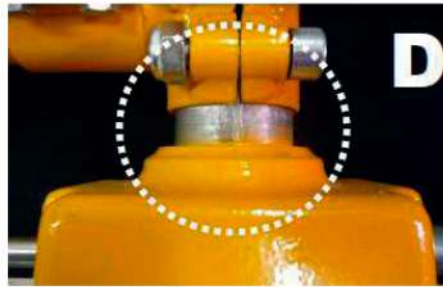
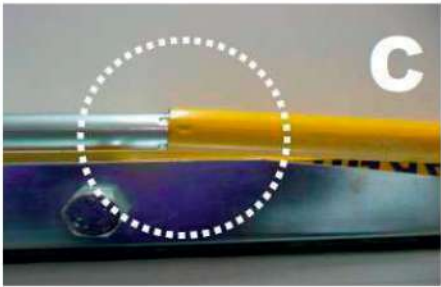
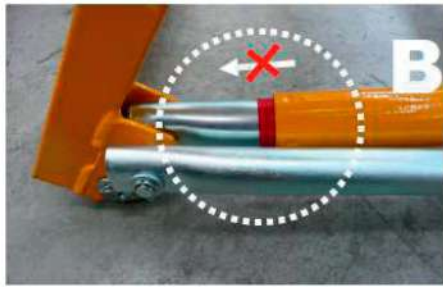
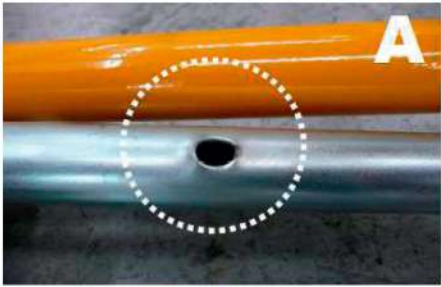
**(pic A)** Leaving the safety pin inserted into the safety bar - risks of deformation and damage the gear structure.

**(pic B)** Exceeding the red sign - risk of breaking the gear.

**(pic C)** and **(pic D)** Forcing the lift past the lowest point - risk of damaging the gear box.



# Pictures





### DECLARATION OF CONFORMITY

This is an important document and should be retained.

**We hereby declare that this product(s) complies with the following directive(s):**

*2006/42/EC Machinery Directive*

*95/16/EC Amending Directive*

**The following standards have been applied to the product(s):**

*ČSN EN ISO 12100:2011, ČSN EN 614-1+A1:2009, ČSN EN ISO 7010:2012, ČSN EN 1494+A1:2010*

*Product certification scheme applied: ČSN EN ISO/IEC 17067:2014, scheme type 1a*

The technical documentation required to demonstrate that the product(s) meet(s) the requirement(s) of the aforementioned directive(s) has been compiled and is available for inspection by the relevant enforcement authorities.

The CE mark was first applied in: 2016-25-11

Product Description: Autolift 3000

Model number(s): AL 3000

Serial/batch number: N/A

Date of issue: 2016-01-21





## AUTOLIFT3000 characteristics (without accessories)

Max. Load	6614 lbs
Dimensions	64.5 x 51.25 x 4.5 inch
Net Weight	99 lbs
Max. Platform Distance	62 inch
Max. Height	23.5 inch

# Unique Tilting Lift

Make your work easy

AUTOLIFT PRODUCTION USA Inc.  
124 Broadkill rd STE 362, Milton, DE, 19968  
us@autoliftproduction.com  
www.autolift3000.com